

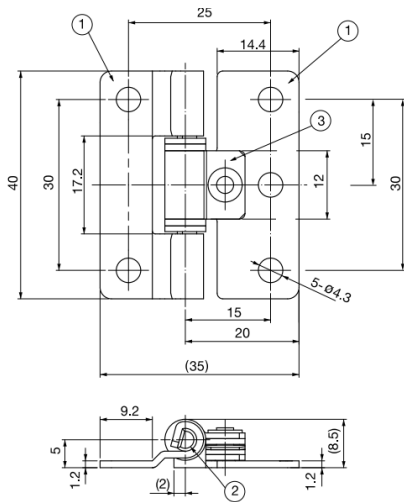
## GSFTH Stainless Steel Torque Hinge

### Features

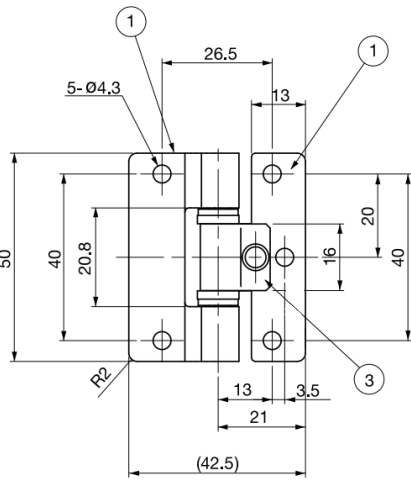
- Hinge with friction torque holds lid / door in desired position
- Stainless steel material ideal for corrosive environments
- Operating temperature: -20°C ~ 60°C



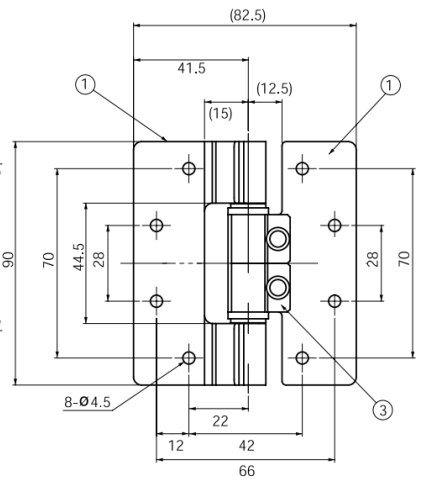
No.	Part Name	Material	Finish
①	Body A	Stainless Steel (SUS304)	Polished
②	Shaft	Stainless Steel (SUS303)	
③	Body B	Stainless Steel (SUS301)	



**GSFTH-02**



**GSFTH-03**



**GSFTH-05**

Part No.	Torque (per piece)
<b>GSFTH-02-5</b>	5 ± 1 kgf.cm
<b>GSFTH-03-9</b>	9 ± 2 kgf.cm
<b>GSFTH-03-19</b>	19 ± 2 kgf.cm
<b>GSFTH-05-35</b>	35 ± 5 kgf.cm
<b>GSFTH-05-58</b>	58 ± 5 kgf.cm